

## Virtus Module

245W,250W,255W,260W



High Module Conversion Efficiency



Easy Installation and Handling for Various Applications



Withstanding Mechanical Load up to 5400 Pa



Conform with PV Standards: IEC 61215:2005, IEC 61730:2004, UL 1703



ISO9001, OHSAS18001, ISO14001

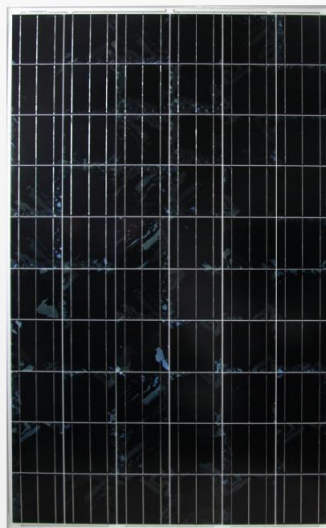


We provide a 10 years material and workmanship guarantee for our modules. In addition, a 90%-power-output guarantee for 10 years and a 80%-power-output guarantee for 25 years of the modules life are provided.

**10-year**  
material & workmanship

**10-year**  
90% power output

**25-year**  
80% power output



## Virtus Module

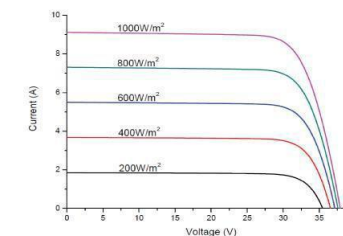
245W,250W,255W,260W

### Dimension



Drawing Only for Reference

### I-V Curves



### Efficiency at Varied Irradiation

Irradiance	200W/m <sup>2</sup>	400W/m <sup>2</sup>	600W/m <sup>2</sup>	800W/m <sup>2</sup>	1000W/m <sup>2</sup>
Efficiency	15.7%	16.0%	16.1%	16.1%	16.0%

### Electrical Characteristics STC

	JC245M-24/Bbv	JC250M-24/Bbv	JC255M-24/Bbv	JC260M-24/Bbv
Maximum Power ( Pmax )	245 W	250 W	255 W	260 W
Power Tolerance	0~+5W	0~+5W	0~+5W	0~+5W
Module Efficiency	15.1%	15.4%	15.7%	16.0%
Maximum Power Current ( Imp )	8.19 A	8.29 A	8.43 A	8.56 A
Maximum Power Voltage ( Vmp )	29.9 V	30.2 V	30.3 V	30.4 V
Short Circuit Current ( Isc )	8.74 A	8.84 A	8.98 A	9.09 A
Open Circuit Voltage ( Voc )	37.1 V	37.3 V	37.4 V	37.6 V

Values at Standard Test Conditions STC ( Air Mass AM1.5, Irradiance 1000W/m<sup>2</sup>, Cell Temperature 25°C )

### Electrical Characteristics NOCT

	JC245M-24/Bbv	JC250M-24/Bbv	JC255M-24/Bbv	JC260M-24/Bbv
Maximum Power ( Pmax )	182 W	186 W	189 W	193 W
Maximum Power Current ( Imp )	6.51 A	6.59 A	6.69 A	6.77 A
Maximum Power Voltage ( Vmp )	28.0 V	28.2 V	28.2 V	28.5 V
Short Circuit Current ( Isc )	7.07 A	7.13 A	7.20 A	7.27 A
Open Circuit Voltage ( Voc )	34.9 V	35.0 V	35.0 V	35.2 V

Values at Normal Operating Cell Temperature, Irradiance of 800 W/m<sup>2</sup>, spectrum AM 1.5, ambient temperature 20°C, wind speed 1 m/s

### Mechanical Characteristics

Cell Type	156 x 156 mm Virtus, 60 ( 6 x 10 ) pcs in series
Glass	High Transmission, Low Iron, Tempered Glass
Frame	Anodized Aluminum Alloy
Junction Box	IP65 rated, with bypass diodes
Dimension	*1640 x 992 x 40 mm
Cable Length	1000 mm
Weight	19 Kg
Installation Hole Location	See Drawing Above

### Characteristics

Temperature Coefficient of Voc	-0.29%/°C
Temperature Coefficient of Isc	0.04%/°C
Temperature Coefficient of Pmax	-0.39%/°C
Nominal Operating Cell Temperature ( NOCT )	45°C±2°C

### Maximum Ratings

Operating Temperature	-40 °C to +85 °C
Maximum System Voltage	1000 VDC (EU) / 600 VDC (US)
Maximum Series Fuse Rating	20A(EU)/ 15A(US)

### Packing Information

Container	20'GP	40'GP	40'HQ
Pallets per Container	12	28	28
Pieces per Container	300	700	770